

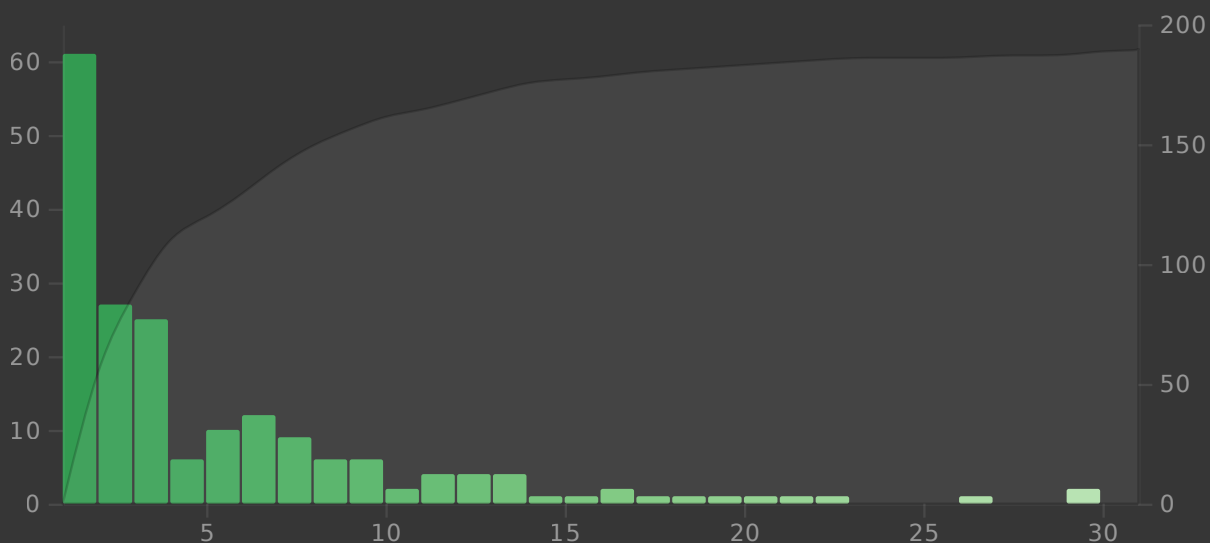
# Today

Studied 211 cards in 12.12 minutes today (3.45s/card)  
 Again count: 144 (68.25%)  
 Learn: 92, Review: 39, Relearn: 80, Filtered: 0  
 No mature cards were studied today.

# Future Due

The number of reviews due in the future.

1 month  
  3 months  
  1 year  
  all



Total: 190 reviews

Average: 6 reviews/day

Due tomorrow: 61 reviews

# Calendar

◀ 2023 ▶

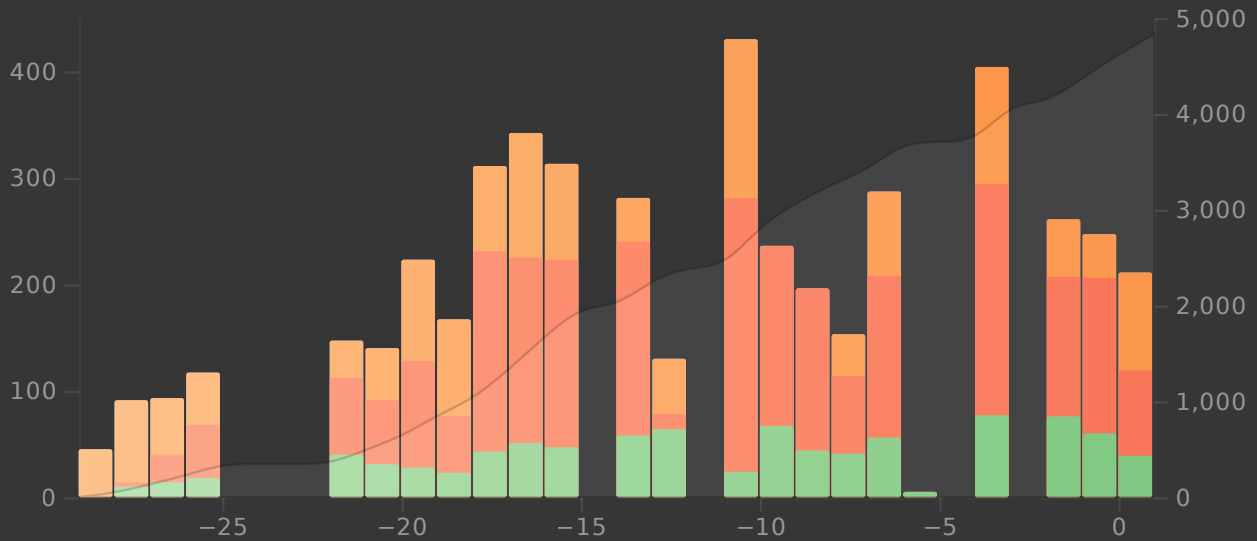
S  
M  
T  
W  
T  
F  
S



# Reviews

The number of questions you have answered.

Time  1 month  3 months  1 year  all



Days studied: 23 of 30 (77%)

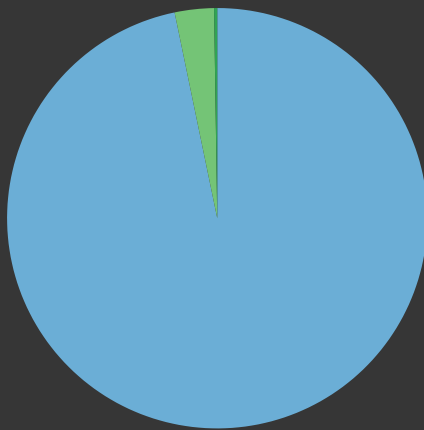
Total: 4,830 reviews

Average for days studied: 210 reviews/day

Average over period: 161 reviews/day

# Card Counts

Separate suspended/buried cards

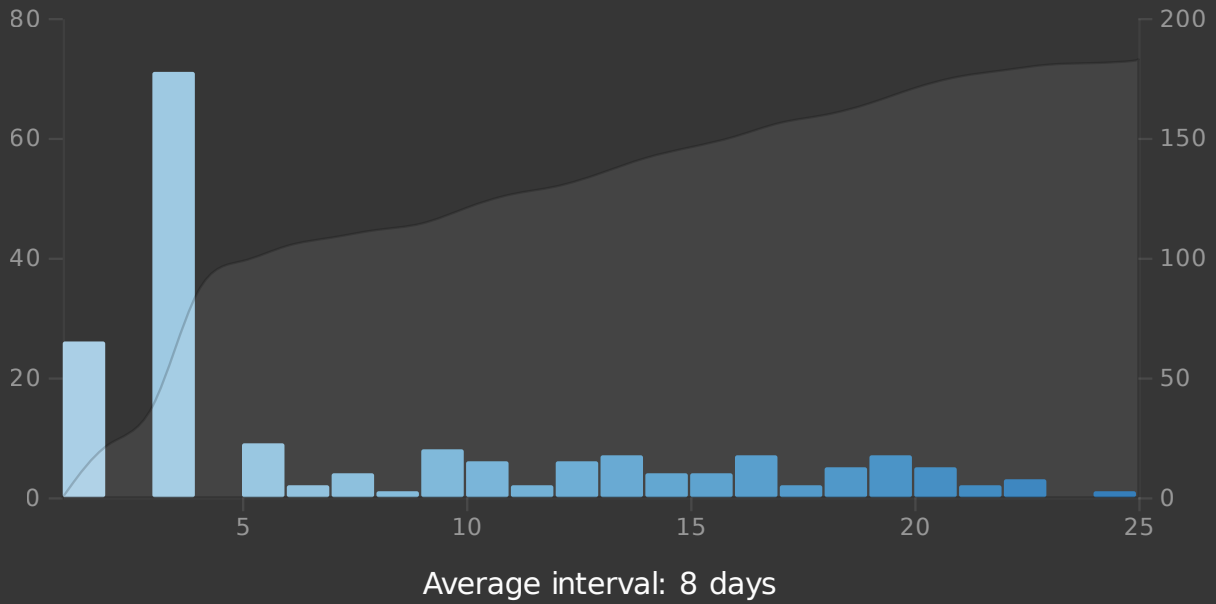


New	5,648	96.75%
Learning	0	0%
Relearning	0	0%
Young	176	3.01%
Mature	14	0.24%
Suspended	0	0%
Buried	0	0%
Total	5,838	

# Review Intervals

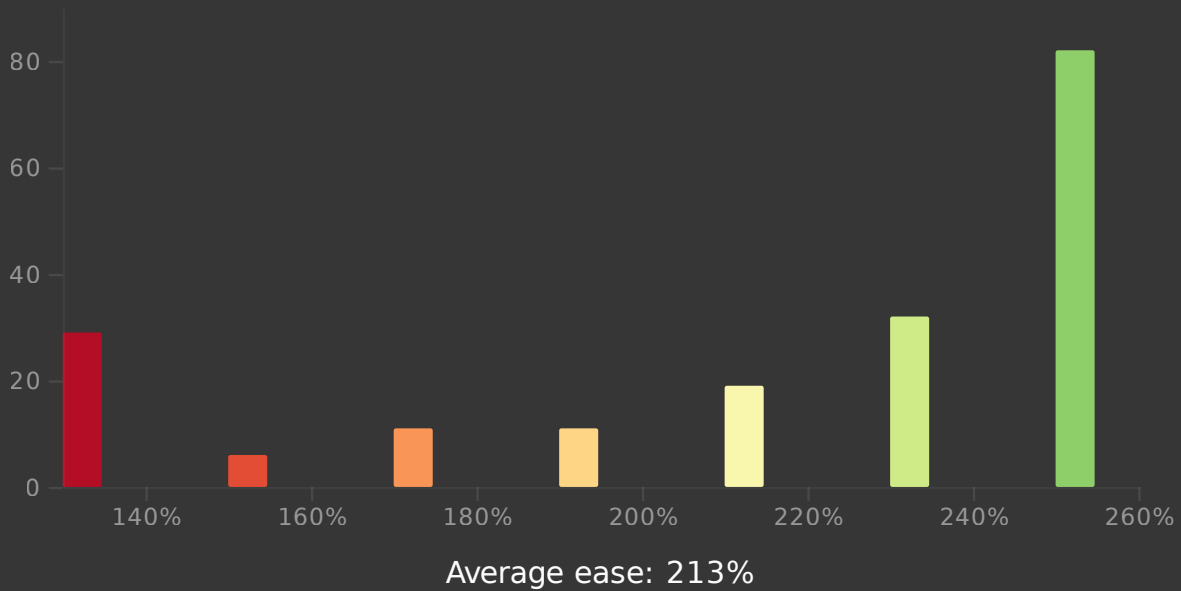
Delays until reviews are shown again.

1 month  50%  95%  all



# Card Ease

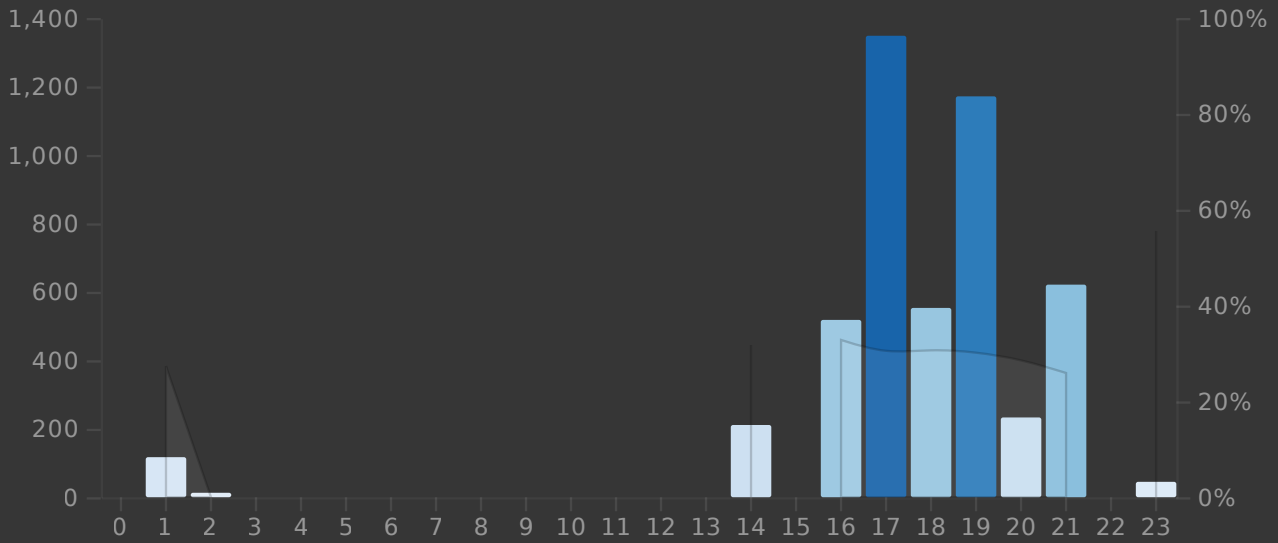
The lower the ease, the more frequently a card will appear.



# Hourly Breakdown

Review success rate for each hour of the day.

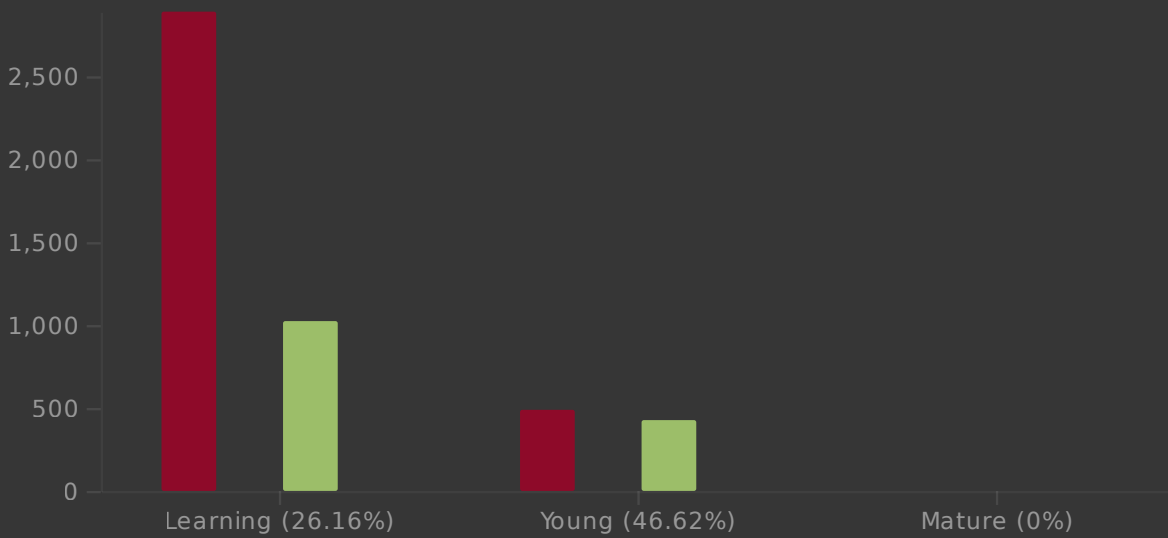
1 month  3 months  1 year  all



# Answer Buttons

The number of times you have pressed each button.

1 month  3 months  1 year  all



# Added

---

The number of new cards you have added.

1 month    3 months    1 year    all

NO DATA